

## Women at Sea

---

### Ship Accommodation Upgrade

*Date:* June 2006

---

*Client:* Australian Navy

*Project Summary:* Completion of a detailed design to modify the CPO Mess on HMAS MELBOURNE to accommodate female sailors.

---

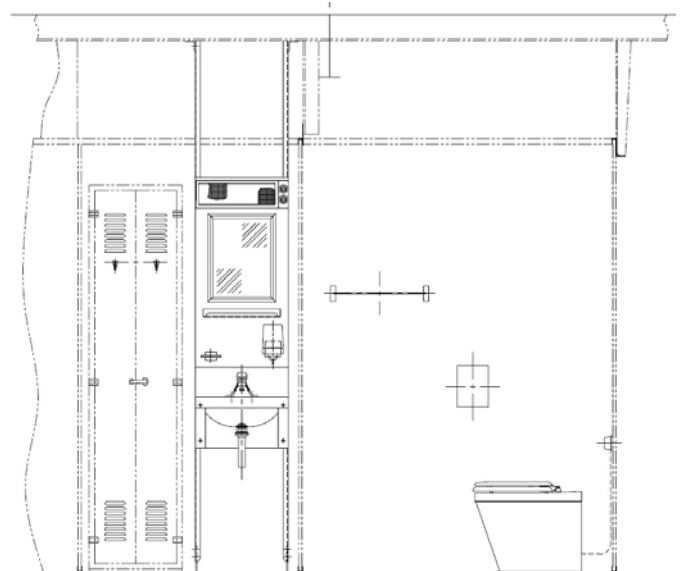
SOFRACO was contracted to complete a detailed design for modifying the CPO Mess on HMAS Melbourne to convert from accommodating 15 males to 12 males and 3 females.

The mess space was to have the majority of the current fit-out removed and then split into a male and female section each with its own bathroom facilities. As the number of staff remained the same, and there was an increase in facilities the space available was very restricted. This required some innovative design to ensure the space would be suitable for use.

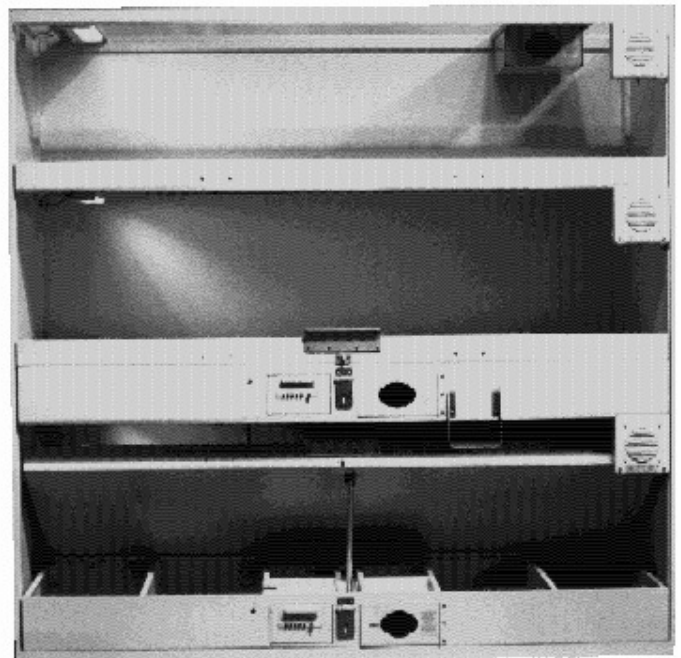
The project involved the development of a suitable layout and the selection of suitable furniture and other items to fit out the mess. As technology has progressed since the original outfit, new items such as modular berths and metal joiner bulkhead systems were used.

In addition to the new furniture and fittings the services to the space required significant modification. This included electrical supply, ventilation system, potable water and drain systems.

Overall the project required a complex integration of all engineering fields which was covered by the multi-disciplinary team at SOFRACO.



**Elevation of New Female CPO Bathroom**



**Typical Modular Berthing System**